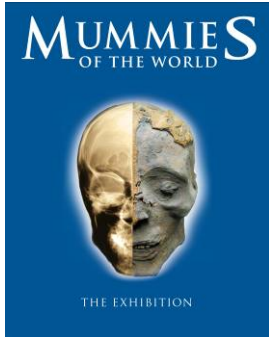


MUMMIES OF THE WORLD

WORLD PREMIERE OF “MUMMIES OF THE WORLD” EXHIBITION At the California Science Center TICKETS ARE ON SALE NOW



LOS ANGELES, June 8, 2010 -- Tickets are on sale now for *Mummies of the World*, the largest exhibition of mummies ever assembled, which makes its world premiere July 1 at the California Science Center in Los Angeles for a limited time.

Mummies of the World is an astounding collection of both naturally and intentionally preserved human and animal mummies, as well as related artifacts from all over the globe, presented together for the very first time. Its treasures include one of the oldest mummified infants ever discovered; the presentation of a mummified family; a German nobleman discovered in a family crypt; and Egyptian animal mummies, intentionally preserved to accompany royals for eternity.

Through a compelling blend of real specimens, hands-on science exhibits, and multimedia 3-D animations this unique exhibition offers an extraordinary window to history. Visitors have an opportunity not only to see real mummies and ancient artifacts, but to use current science tools and techniques to explore who they were and how they lived.

The exhibition, featuring mummies and objects from South America, Europe, Asia, Oceania, and Egypt, combines science and history to provide new insights into past peoples, civilizations and environments.

Mummies of the World is a ticketed event only and requires a timed entry. Advance reservations are highly recommended. **Tickets can be purchased online now at www.californiasciencecenter.org** or by calling 323-SCIENCE (323-724-3623).

Ticket prices:

General Public:

- Adult (age 18-59) -- \$19.50
- Student/Youth (age 13-17), College with valid I.D. and Seniors (60 +) -- \$16.50
- Children (age 4-12) -- \$12.50, children under 3 – FREE

California Science Center Members:

- Adult (age 18-59) -- \$12.50
- Student/Youth, College with valid I.D. and Seniors (60 +) -- \$11.50
- Children (age 4-12) -- \$10.50, children under 3 - FREE



To enhance the guest experience during the run of *Mummies of the World*, the Science Center IMAX Theater will be featuring *Mummies 3D: Secrets of the Pharaohs*. Combo tickets for any of the IMAX films and *Mummies of the World* are available.

American Exhibitions, Inc. is one of the leading exhibition producers in the United States, specializing in world-class touring exhibitions for science centers and museums. It is a longstanding member of the Association of Science-Technology Centers (ASTC) and the American Association of Museums (AAM).
<http://www.americanexhibitions.com>

Reiss-Engelhorn Museums, an internationally acclaimed complex in Mannheim, Germany, has been one of the major venues for exhibitions in Europe in the realms of archeology and world cultures. The museum houses a collection of 1.2 million objects in more than 300,000 square feet of exhibition space.
<http://www.rem-mannheim.de/>

The **California Science Center** is a dynamic destination where families, adults and children can explore the wonders of science through interactive exhibits, live demonstrations, innovative programs and awe-inspiring films. Its mission is as follows:” We aspire to stimulate curiosity and inspire science learning in everyone by creating fun, memorable experiences, because we value science as an indispensable tool for understanding our world, accessibility and inclusiveness, and enriching people’s lives.”

The **California Science Center** and **IMAX Theater** are located in historic Exposition Park just west of the Harbor (110) Freeway at 700 Exposition Park Drive. The Science Center is open daily from 10:00 a.m. – 5:00 pm. Please check the Science Center web site for schedule updates. Tickets for *Mummies of the World* are currently on sale. Guests are encouraged to buy their tickets online at www.californiasciencecenter.org to reserve an entry date & time. The exhibit's special group information number is (213) 744-2019. *Mummies of the World* admission prices are \$19.50 for adults 18-59, \$16.50 for youth 13 to 17, students with I.D. & seniors 60+, and \$12.50 for children 4 - 12. Member rates are \$12.50 for adults, \$11.50 for youth 13 to 17, students with I.D. & seniors 60+, and \$10.50 for children 4-12. *Mummies of the World* and IMAX combination ticket prices are \$25.75 for adults 18-59, \$21.50 for youth 13-17, students with I.D. and seniors 60+, and \$16.50 for children 4-12. Special rates for schools and other groups of 15 and over apply. Children under the age of 13 must be accompanied by a responsible adult. Admission to all other Science Center exhibits is free. More information is also available at www.californiasciencecenter.org or www.mummiesoftheworld.com.

Media Contacts:

SWPR Group

Lisa Porter/Bonnie Winings

Barry Smith/Amy Ulrich

(818) 760-7131

lporter@swprgroup.com

bwinings@swprgroup.com

bsmith@swprgroup.com

aulrich@swprgroup.com

California Science Center

Shell Amega/Paula Wagner/Kristina Kurasz

(213) 744-7446

samega@cscmail.org

pwagner@cscmail.org

kkurasz@cscmail.org

###