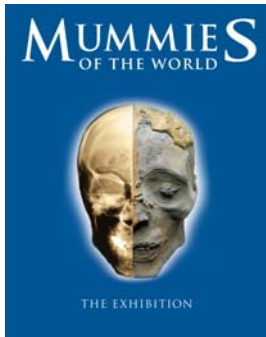


# MUMMIES OF THE WORLD

## WORLD PREMIERE OF “MUMMIES OF THE WORLD” EXHIBITION

At the California Science Center

TICKETS GO ON SALE BEGINNING JUNE 6



LOS ANGELES, May 11, 2010 ---- Tickets go on sale June 6 for *Mummies of the World*, the largest exhibition of mummies ever assembled, which makes its world premiere July 1 at the California Science Center in Los Angeles for a limited time only.

*Mummies of the World* is an astounding collection of both naturally and intentionally preserved human and animal mummies, as well as related artifacts from all over the globe, presented together for the very first time. Its treasures

include one of the oldest mummified infants ever discovered; the presentation of a complete mummified family; a German nobleman discovered by his own descendants; and Egyptian animal mummies, ritually preserved to accompany royals for eternity.



This unique exhibition offers a compelling blend of history and science – an opportunity to study real mummies up close, and to learn more about who they were and how they lived through hands-on science exhibits, multimedia 3D animations and current science tools.



This traveling exhibition featuring mummies and objects from South America, Europe, Asia, Oceania, and Egypt, combines science and history to provide new insights into past peoples, civilizations and environments.

*Mummies of the World* is a ticketed event and requires a timed-entry. Advance reservations are highly recommended. **Tickets can be purchased online beginning June 6 at [www.californiasciencecenter.org](http://www.californiasciencecenter.org)** or by calling 323-SCIENCE (323-724-3623). Group reservations are available at 888-MUMMY TIX (888-686-6984)

**American Exhibitions, Inc.** produces world-class touring exhibitions for science centers and museums that physically, intellectually and emotionally excite, educate and engage visitors. As a longstanding member of the Association of Science-Technology Centers (ASTC) and the American Association of Museums (AAM), American Exhibitions, Inc. is one of the leading exhibition producers in the United States. [www.americanexhibitions.com](http://www.americanexhibitions.com), [www.mummiesoftheworld.com](http://www.mummiesoftheworld.com).



[www.mummiesoftheworld.com](http://www.mummiesoftheworld.com)

The **California Science Center's** mission is as follows: "We aspire to stimulate curiosity and inspire science learning in everyone by creating fun, memorable experiences, because we value science as an indispensable tool for understanding our world, accessibility and inclusiveness, and enriching people's lives."

General Info: The California Science Center and IMAX Theater are located in historic Exposition Park just west of the Harbor (110) Freeway at 700 Exposition Park Drive, Los Angeles. Open daily from 10 a.m. to 5 p.m., except on Thanksgiving, Christmas and New Year's Day. For recorded information, including IMAX show times, call 323.SCIENCE (323-724-3623).

[www.californiasciencecenter.com](http://www.californiasciencecenter.com)

**Reiss-Engelhorn Museums**, an internationally acclaimed complex in Mannheim, Germany, has been one of the major venues for exhibitions in Europe in the realms of archeology and world cultures. With a collection that began in the early 1700s, the museum houses more than 1.2 million objects in its collection, comprising over 300,000 square feet of exhibition space. <http://www.rem-mannheim.de/>

Press Contacts:

**SWPR Group**

Lisa Porter/Bonnie Winings

Barry Smith/Amy Ulrich

(818) 760-7131

[lporter@swprgroup.com](mailto:lporter@swprgroup.com)

[bwinings@swprgroup.com](mailto:bwinings@swprgroup.com)

[bsmith@swprgroup.com](mailto:bsmith@swprgroup.com)

[aulrich@swprgroup.com](mailto:aulrich@swprgroup.com)

**California Science Center**

Shell Amega/Paula Wagner

(213) 744-7446

[samega@cscmail.org](mailto:samega@cscmail.org)

[pwagner@cscmail.org](mailto:pwagner@cscmail.org)

[kkurasz@cscmail.org](mailto:kkurasz@cscmail.org)

###